



Discovery Worksheets

Build a city block

Over the last 50 years, office buildings around the world have been getting taller and taller. Cities, however, need to be more than just concrete jungles. They must have green spaces like parks — where people can relax.

Your brief

You are the architect. You've been given the chance to design and build an inner city block. To do so, you must lay out a model. Use an A3 sheet of thick card as your city block. (It is equivalent, scale wise, to a block about 180 m long and 120 m wide, with a 30 m surround for streets and footpaths.) Rule and colour a grey band about 4 cm wide around the outside edge of the sheet to represent the streets and footpaths.

Your task is to construct and then arrange variously shaped 'building' blocks on your city block in whatever arrangement you think is most pleasing. Your block must contain some 'green space'.

Your drawings

Building diagrams and model instructions are included on the next page. The dimensions for the building shapes have been decided by an architect, as an appropriate scale for an 'A3' building block. However, you might wish to vary the height of some of these. Those dimensions that can be varied are shown with a thicker line.

All building templates should be accurately drawn up on 1 mm thick cardboard and carefully cut out. Mark all dotted lines with a pencil line. Use a safety blade and ruler to gently score along these pencil lines (your fold lines). Be careful not to cut right through the card. **Take extreme care not to cut your fingers.**

Your construction program

Instructions on how to assemble the scaled version of the 20-storey building are included on the next page. However, the same assembly principle applies for all buildings and building parts.



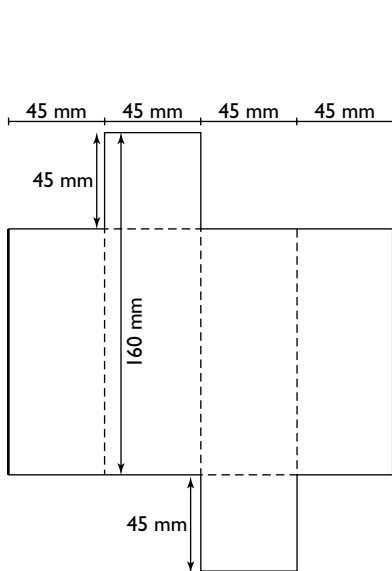
Atlas of Discovery, pp. 28–29;

A3 base board card;

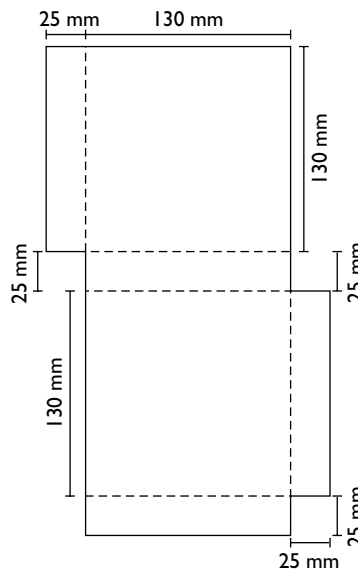
2 sheets of 1 mm thick cardboard; safety knife;

quick-drying glue, scissors and sandpaper;

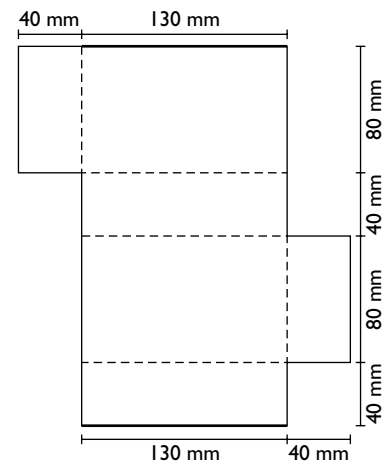
green paint; chunks of foam rubber



Tower block —
20 storeys high



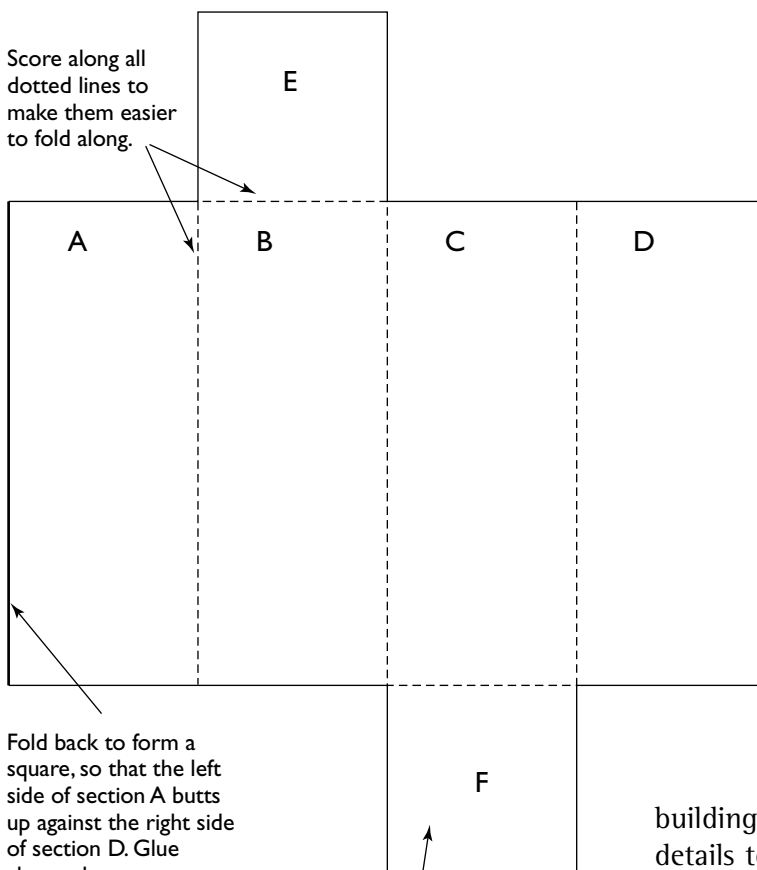
Podium building (on which tower blocks sit) — 2 storeys high



Office block building —
10 storeys high

Note: These shapes should be drawn and cut to dimensions stated.

Building assembly instructions



Score along all dotted lines to make them easier to fold along.

Fold back to form a square, so that the left side of section A butts up against the right side of section D. Glue along edges.

Fold pieces E and F back to cover the spaces at each end of the column. Glue.

Allow a glued edge to dry before gluing another.

Green space construction ideas

Green sandpaper, or sandpaper painted green, is a good 'grass' surface. Cut it out to the size required and glue it to your block. Similarly, coarse grey sandpaper is good for constructing footpaths and paths through your park.

Trees (about 2.5 cm high, to keep the scale consistent) can be made from small pieces of foam rubber, painted green and stuck on the end of tree twigs. To keep them standing, poke the stick through a hole in the card, and secure underneath. Bushes can be tiny chunks of foam rubber, painted green, and clumped together.

Finishing touches

White card models are quite acceptable for architectural models. However, you might like to copy pictures of office

building exteriors from magazines and use these details to paste around your building frames. Remember to photocopy these so that you keep the scale in proportion — and you might need to make many copies of the same picture!

Decorative touches you can add to the tops of buildings include small box shapes, small pyramid shapes and long poles (e.g. thin wooden dowel).